

## Instructions

Drawing No.: APT0.507.013.1

Before installing the device, please read the instructions.

### Summary

#### Main application

TL-90 Series tower Lamp is widely used in all kinds of control circuits, e.g. mechanism, electric power, chemical industry, ship, railway, metallurgy. It serves as a alert signal, operation indication and remote control.

#### General product information

TL-90   /   /

① ② ③ ④ ⑤ ⑥ ⑦ ⑧ ⑨

- ① Tower lamp type
- ② Light source: L (LED) 、 B (bulb)
- ③ Glowing forms L: Permanent F: flashing S: rotating
- ④ Sound source: unmarked: soundless 、 B : buzzing
- ⑤ Sound forms: unmarked: soundless 、 I : intermittent 、 C: continuous 、 W (alarm whistle)
- ⑥ Color: r -red 、 g -green 、 y -yellow 、 b -blue 、 w -white
- ⑦ Voltage class : 23 : AC/DC24V 、 24 : AC/DC36V 、 26 AC/DC110V 、 31: AC220V
- ⑧ Wiring method: S : side outlet 、 D: bottom outlet
- ⑨ Auxiliary code

### Installation caution

- 1) We need to check whether the type meet selection requirement.
- 2) We must turn off power before installation and recondition.
- 3) Choose the correct operational voltage
- 4) Avoid chemicals to touch product.

### Technical feature

#### Parameters

- 1) Rated insulation voltage (Ui) : 690V
- 2) Rated voltage/ rated current : Table 1
- 3) Power frequency withstand voltage : AC1890V/50Hz 5s

#### Operation condition

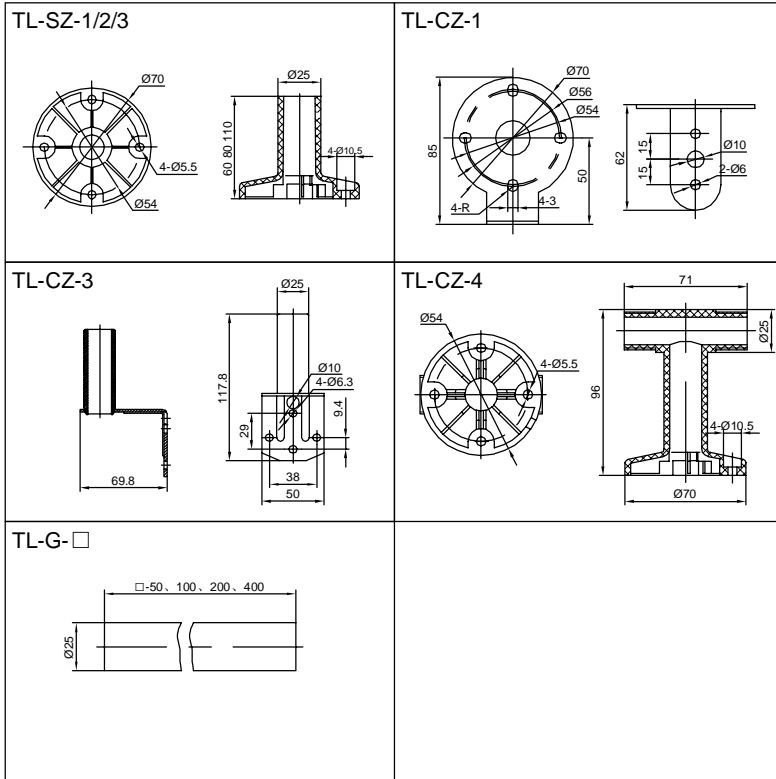
- 1) Environment temperature : -5 °C ~ +40°C
- 2) Altitude : ≤2000 meters
- 3) Pollution class : III
- 4) Degree of protection : IP65(single light or alarm acousto-optical combination)  
IP40(con tinuous/intermittent acousto-optical combination)
- 5) Relative air humidity : ≤98%

Table 1

voltage(V) type \ current (mA)	AC/DC24	AC/DC36	AC 110	AC 220
TL90-LL	110	110	25	33
TL90-LF	110	110	25	46
TL90-LS	54	52	25	32
TL90-BL	140	90	32	25
TL90-BF	140	90	32	25
LL/BC/I/W	210	190	44	53
LF/BC/I/W	210	190	44	58
LS/BC/I/W	152	132	44	44
BL/BC/I/W	240	170	51	37
BF/BC/I/W	240	170	51	37

# Installation

## Mounting type

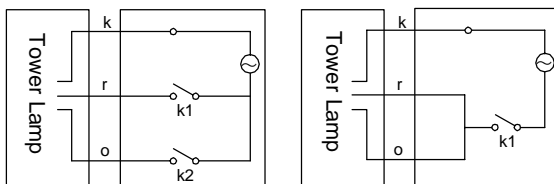


Appearance dimension  
Picture 1

Vertical mounted diagram  
Picture 2

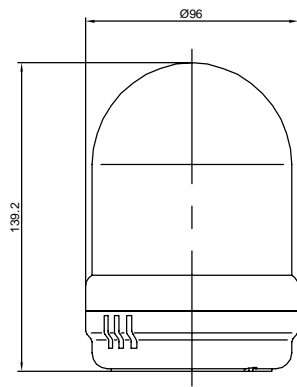
Lampshade and base mounting instruction  
Picture 3

Picture 1

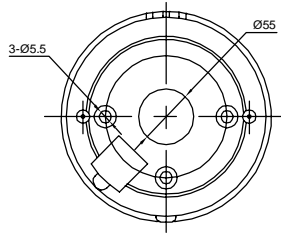


Note: r-red wire (LED power wire)  
o-orange line (buzzer power wire)  
k-black wire (shared power wire)  
length:1metre.

Picture 2



mounting dimensions



Picture 3

marked position before assembly

marked position after tight rotating

